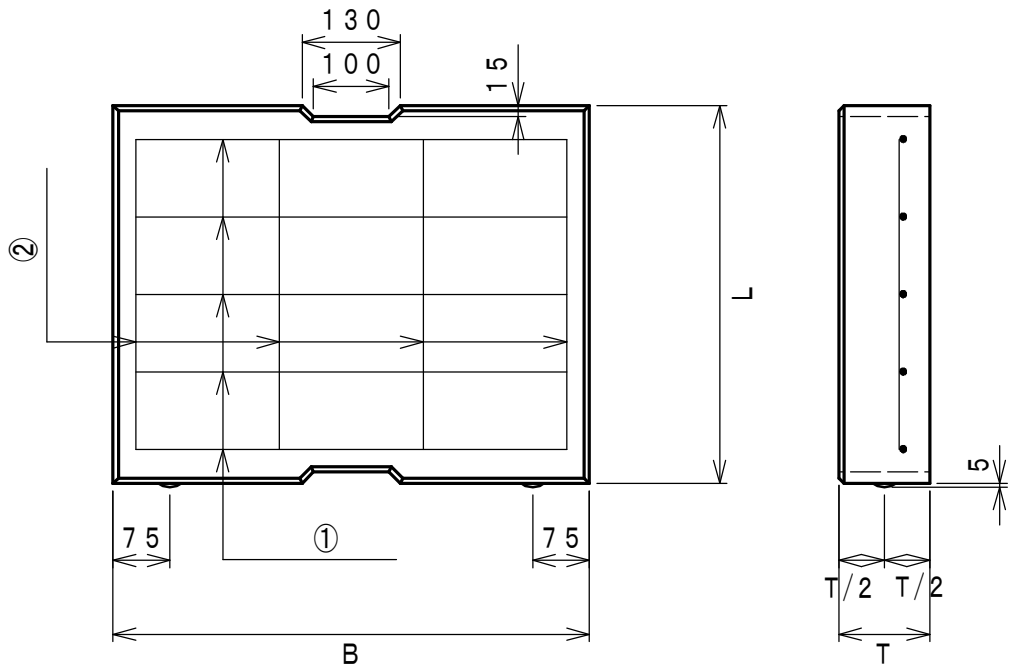
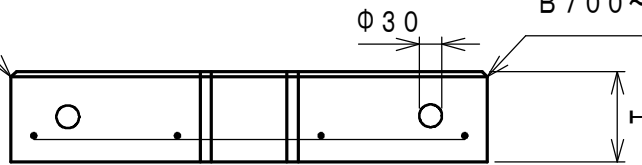


側溝蓋 C7 型 (歩道用)



B300~B600は7C

B700~B800は10C



B300~B600は4面面取り

B700~B800は2面面取り

呼び名	寸法 (mm)			配筋		重量 (Kg)
	B	T	L	①	②	
C7-B300	430	100	500	D13-4	D13-4	53
C7-B400	530	100	500	D13-4	D13-4	64
C7-B500	630	120	500	D13-5	D13-4	92
C7-B600	730	120	500	D13-5	D13-5	105
C7-B700	830	120	1000	D13-8	D13-6	239
C7-B800	930	120	1000	D13-8	D13-6	268
許容差 (mm以内)	±3	±2	±3			